

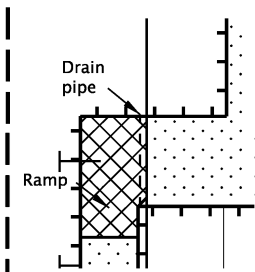
1.a. SIDEWALK DIVERSION Within roadway

NOTES:

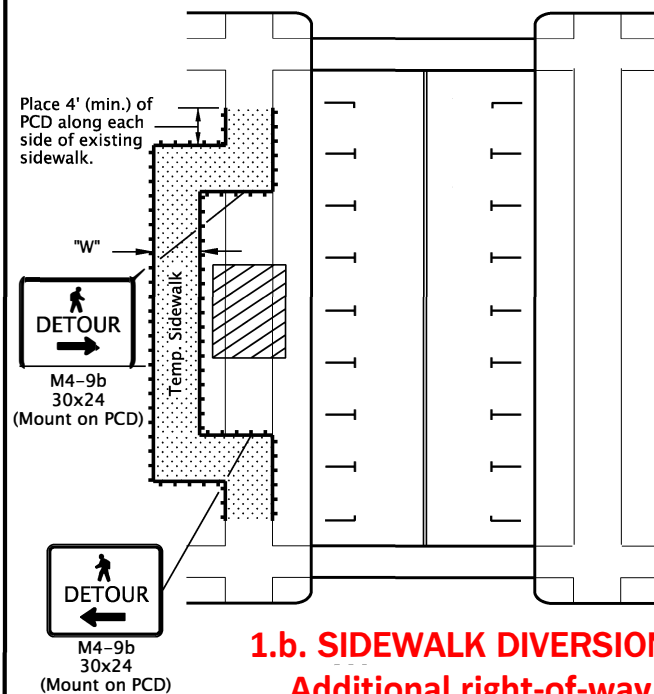
- Place or construct temp. sidewalk ramp, as needed.
- For roadways with a pre-construction posted speed of 40 mph or less.
- See inset "A" for Temp. Sidewalk Ramp details.
- "W" = 60", or, where 60" width cannot be maintained through the entire route, provide 48" min. width with 60" x 60" passing spaces every 200 ft.
- Use temporary ADA compliant surfaces to cross planter strips or other non-traversable surfaces.

NOTES:

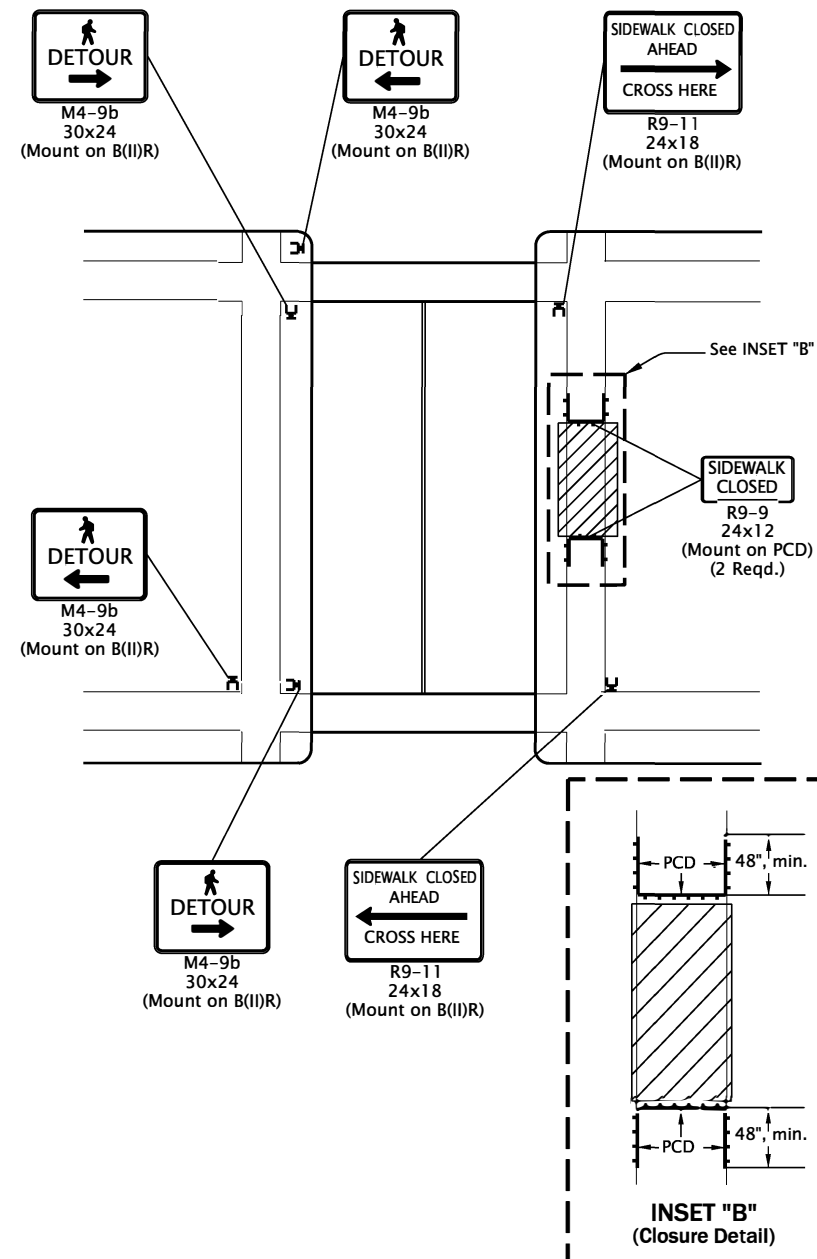
- Ramp size will vary. Ramp must meet ADA requirements incl. max design grade of 7.5% and max design cross slope of 1.5%.



INSET "A"
(Temp. Sidewalk Ramp)



1.b. SIDEWALK DIVERSION - Additional right-of-way

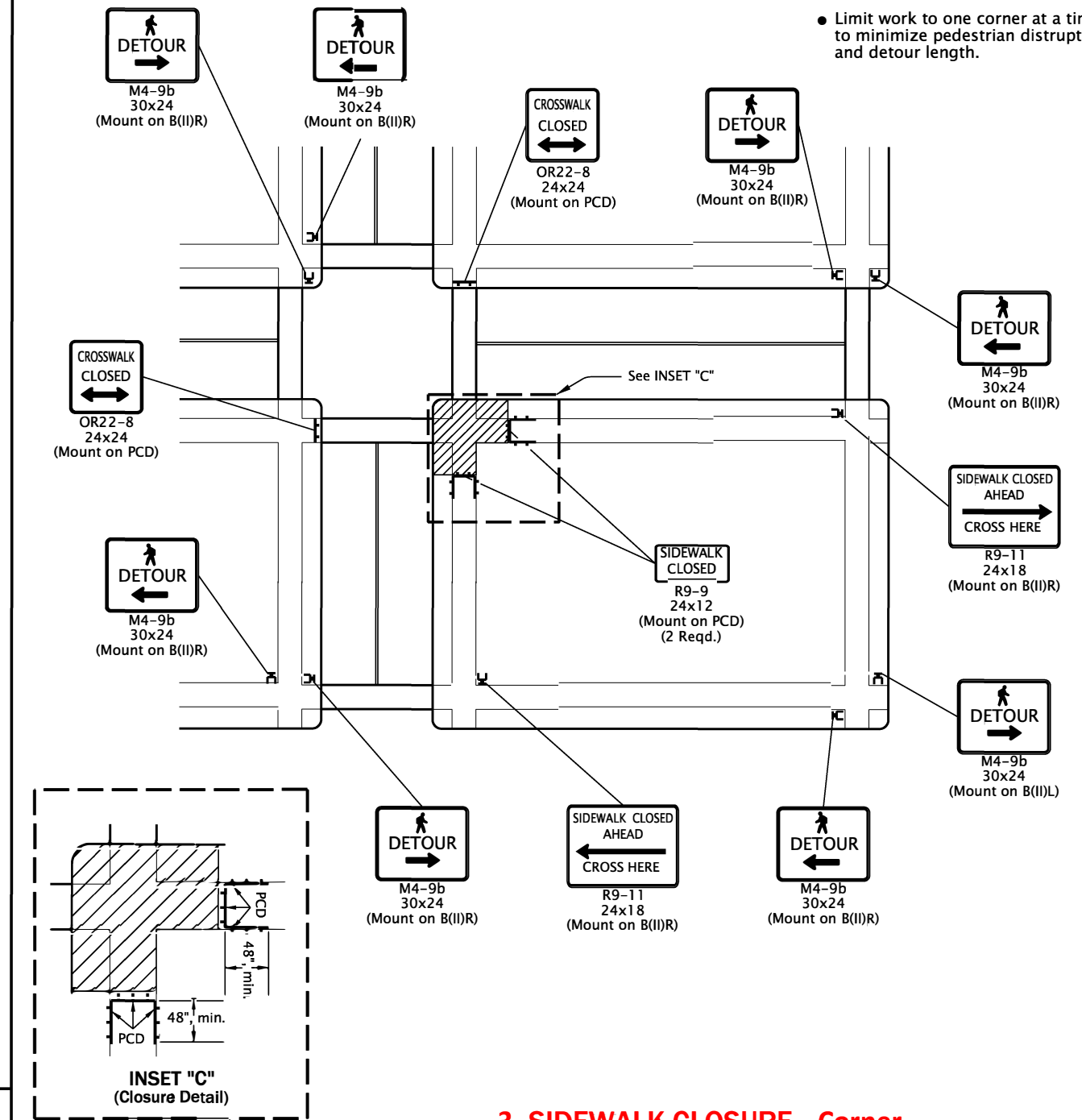


2. SIDEWALK CLOSURE - Mid-block

GENERAL NOTES FOR ALL DETAILS:

- When closing or relocating crosswalks or other pedestrian facilities provide ADA compliant facilities. Include accessibility features consistent with existing pedestrian facilities by providing adequate slope transitions and surfacing.
- Provide non-slip, 60 inch minimum wide surface through entire pedestrian route. If not possible, provide 48" min. width with 60" x 60" passing spaces every 200 feet along the route.
- Only TCD for pedestrians are shown. Other devices may be necessary to control vehicular traffic.
- Stage work, as necessary, to provide a temporary pedestrian access route at all times. For roadways with no available detours, maintain one open sidewalk at all times.
- Minimize pedestrian out-of-direction travel.

- UNDER PEDESTRIAN TRAFFIC
- UNDER CONSTRUCTION
- PEDESTRIAN CHANNELIZING DEVICE (PCD)



3. SIDEWALK CLOSURE - Corner

NOTE:

- Limit work to one corner at a time to minimize pedestrian disruption and detour length.

CALC. BOOK NO. _____ N/A _____ SDR DATE _____ 01-JUL-2020 _____

NOTE: All material and workmanship shall be in accordance with the current City of The Dalles Standard Specifications

CITY OF THE DALLES STANDARD DRAWINGS
TEMPORARY PEDESTRIAN ACCESSIBLE ROUTES

2022

DATE	REVISION	DESCRIPTION

The selection and use of this Standard Drawing, while designed in accordance with generally accepted engineering principles and practices, is the sole responsibility of the user and should not be used without consulting a Registered Professional Engineer.